

# Health is more than health care

---

Investing and innovating in social  
determinants of health as a purchaser

# HCA at a glance

[www.hca.wa.gov](http://www.hca.wa.gov)

Vision: A healthier Washington

## Who we serve

We purchase whole-person health care for nearly a third of the state's residents:

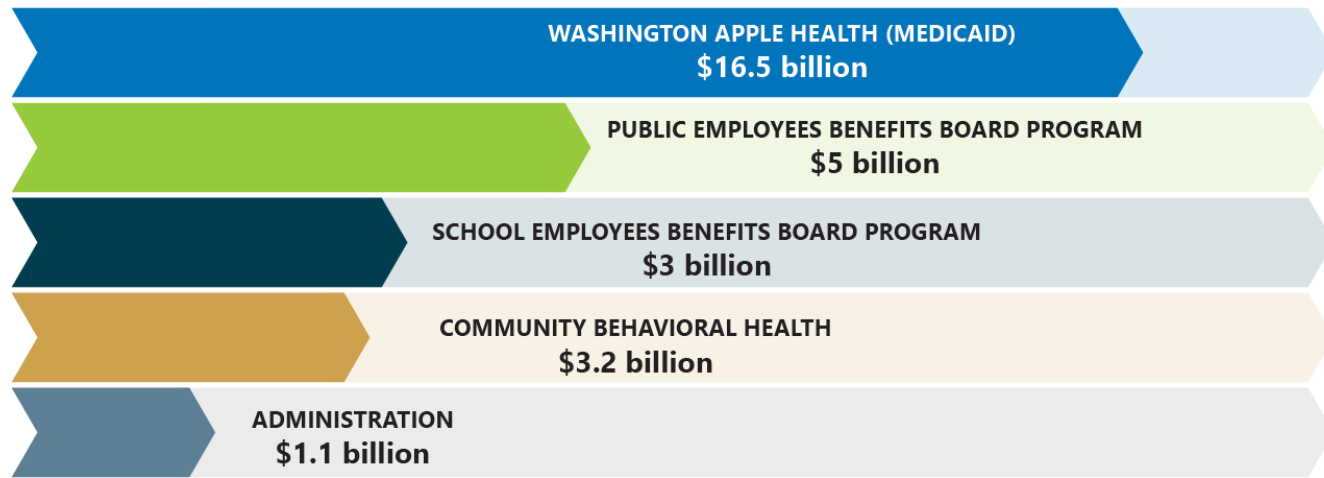
**1.8 million** Washington Apple Health (Medicaid)

**381,000** Public Employees and their families

**300,000** School Employees and their families



## 2019-21 agency budget



# Federally Qualified Health Centers



**COMMUNITY  
HEALTH PLAN**  
of Washington™



Regence BlueShield is an Independent Licensee of the Blue Cross and Blue Shield Association



\* And all other medical groups and hospitals in Washington state

# Supporting social determinants as a health care purchaser



# How do we finance this?

---

SPA



WAIVERS

# Value-based Payment

When a health care provider is paid for providing high-quality and high-value care to their patients.



# What is Healthier Washington?

Healthier Washington is transforming the health care system to achieve better population health, reward high-quality care, and curb health care costs. It represents patients, providers, payers, purchasers, community advocates, and others working together, supporting best practices and using data to improve the lives of Washingtonians.

## Taking a population health approach

Through initiatives like the greater Washington multipayer program and the plan for improving population health.

## Supporting providers

Through the practice transformation support hub, which provides coaching and tools to help create community linkages and transition to value-based care.

## Integrating physical and behavioral health

Through delivering care for body and mind with a single, integrated insurance plan.

## Leveraging federal funds

Through the Medicaid transformation demonstration project, which supports stable housing and employment services, family caregivers, and projects that help redesign care delivery.

## Using data to improve care

Through the Analytics, Interoperability, and Measurement (AIM) strategy, along with tracking health care performance to show progress toward improving quality and curbing costs.

## Empowering the patient

Through shared decision making tools that help patients make health care decisions with their providers.

## Ensuring an effective health care workforce

Through community health workers who serve as links between health, social services and the community.

## Focusing on communities

Through Accountable Communities of Health (ACHs), where regional coalitions assess and respond to specific health needs in their areas.

## Rewarding high-quality care

Through value-based payment models that shift from a system that pays for volume to one that rewards quality and better outcomes.

# Where we've been and where we're going

Washington State  
Health Care Authority

# Accountable Communities of Health





# Foundational Community Supports (FCS) eligibility

---

## Supportive housing

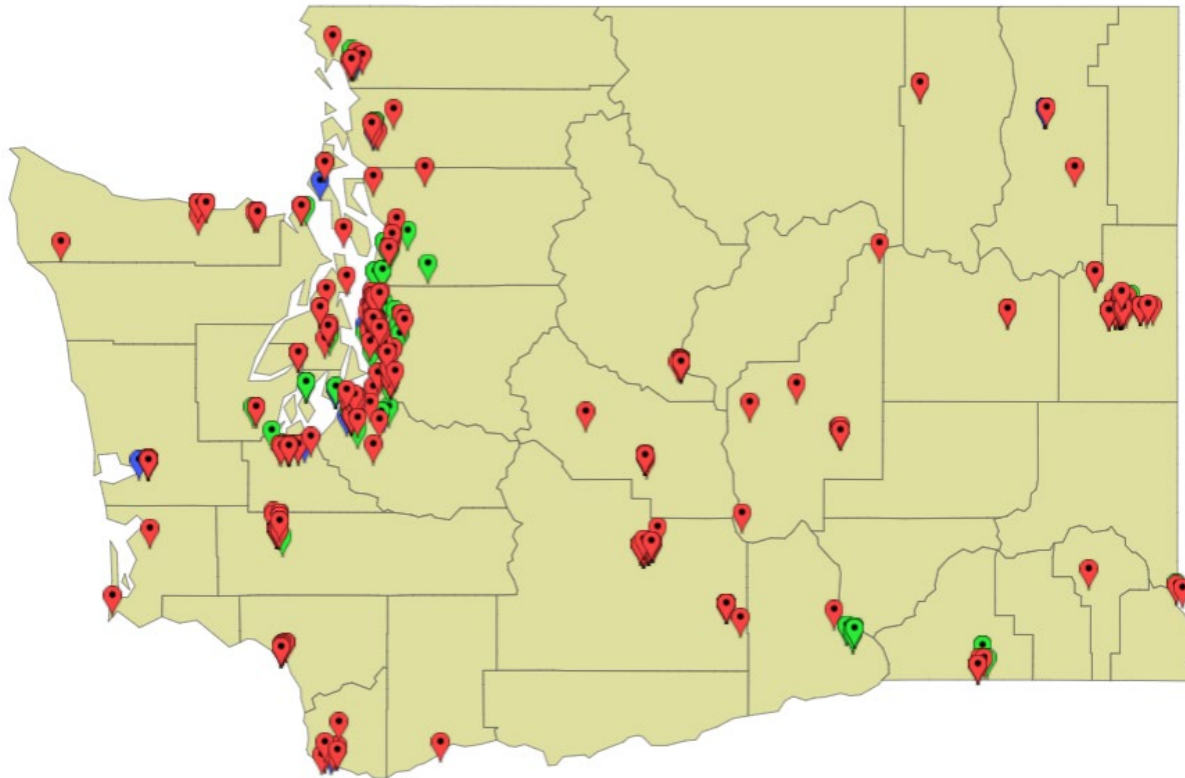
- Chronic homelessness
- Frequent or lengthy stays in institutional settings
- Frequent stays in residential care settings
- Frequent turnover of in-home caregivers
- Predictive Risk Intelligence System score of 1.5 or above

## Supported employment

- Housing & Essential Needs and Aged Blind or Disabled enrollees
- Difficulty obtaining or maintaining employment due to age, physical or mental impairment, or traumatic brain injury
- SUD with a history of multiple treatments
- Serious mental illness or co-occurring mental and substance use disorders

# Foundational Community Supports (FCS) providers

---



📍 Employment & Housing Support (SE/SH)

📍 Employment Support (SE)

📍 Housing Support (SH)

# What's Next

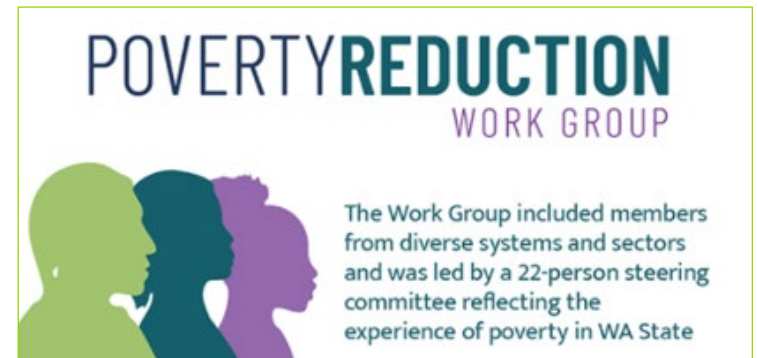
---



Apple health for kids coverage until  
Kindergarten



**Earned Income Tax Credit**





# Contact us

---

- ▶ [sue.birch@hca.wa.gov](mailto:sue.birch@hca.wa.gov)
- ▶ [hca.wa.gov](http://hca.wa.gov)